

智慧城市 / 智慧交通

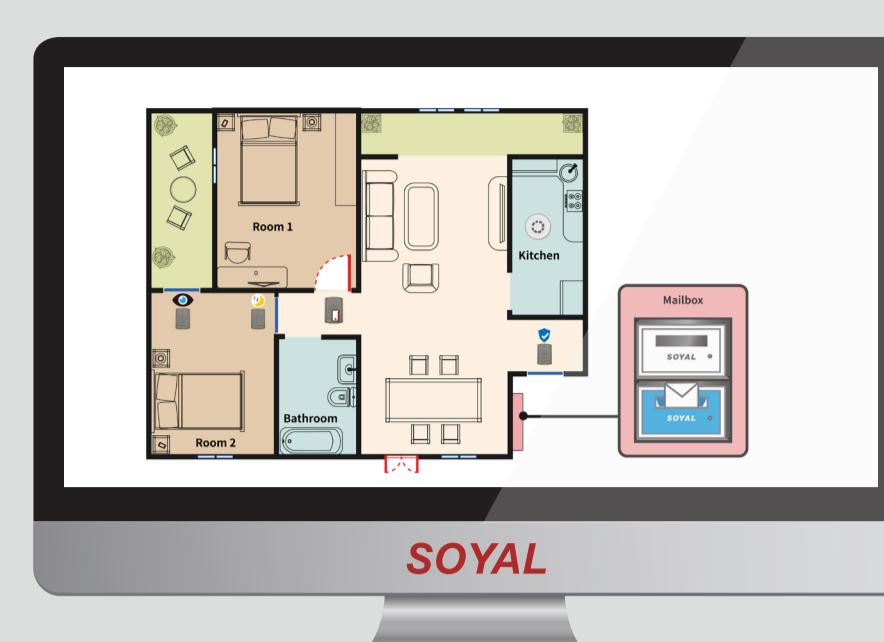
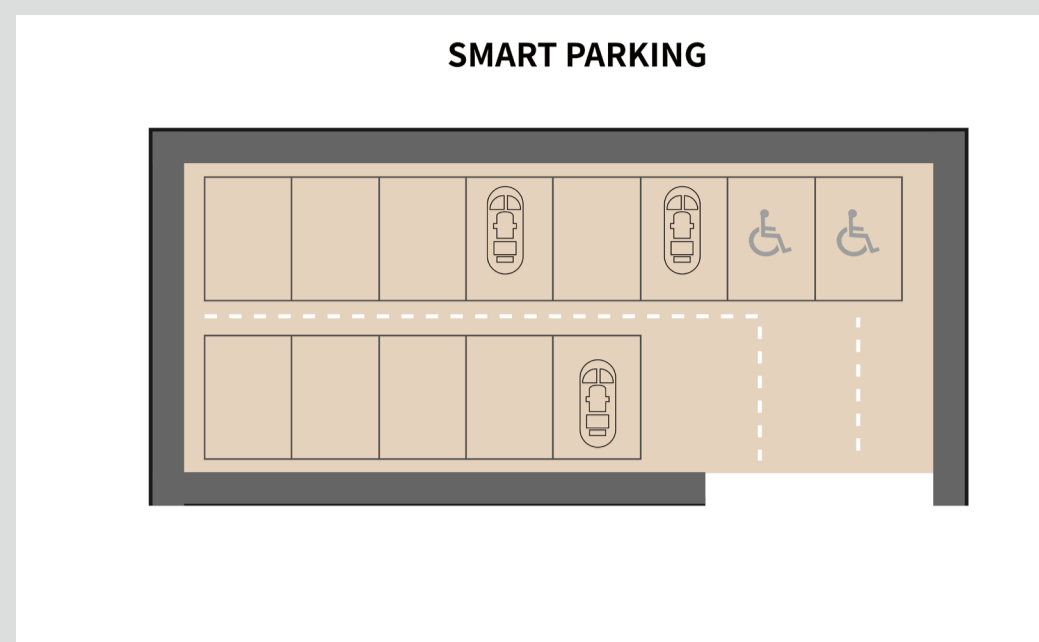
Smart City / Smart Traffic

SOYAL[®]
ACCESS & INDUSTRIAL CONTROL

智慧大樓圖控 Smart Building



智慧停車圖控 Smart Parking



主動傳送到雲端
Actively Push data to
Cloud Platform

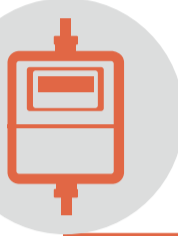
Ethernet

智慧大樓 Smart Building

AR-401-IO-0808R-U2
智能三錶及大樓監控雲端聯網設備
Smart 3 Meters & Building Monitoring
Cloud Networking Device



智慧瓦斯錶 Smart Gas Meter



Modbus 控制器可連接智慧瓦斯錶，讀取瓦斯使用量，並將數據送到後台軟體管理；連接偵測器可監測瓦斯是否有洩漏狀況及時發送警報
Modbus Controller can connect smart gas meter to read/ monitor gas consumption value and send data to software to manage and control; the connected detector can monitor and send alarm in case of gas leak.

智慧電錶 Smart Power Meter



Modbus 控制器可連接智慧電錶，讀取用電量，並將用電之數據送到後台軟體做及時的用電管控制。
Modbus Controller can connect smart power meter to read/ monitor power consumption value and send data to software to manage and control.

智慧水錶 Smart Water Meter



Modbus 控制器可連接智慧水錶，讀取用水量，並將用水之數據送到後台軟體做及時的用水管控制。
Modbus Controller can connect smart water meter to read/ monitor water consumption value and send data to software to manage and control.

AR-837-EF9DO
非接觸式各樓層管制
Contactless Lift Floors Controller



指紋進出管制 Fingerprint recognition Access Control



透過指紋辨識設備管轄區域人員進出，只有註冊的人員可進出，並產生進出記錄給軟體追蹤管理。
Control Area personnel access by fingerprint recognition controller; only registered personnel can enter specified Area and track access log from software.

AR-837-EA
人臉辨識大廳出入口管制
Face recognition Access Control at Entrance



人臉辨識大廳出入口管制 Face recognition Access Control at Entrance



透過人臉辨識設備管轄大樓人員進出，只有註冊的人員可進出，免接觸更安全。
Control personnel access by face recognition controller at entrance; only registered personnel can enter the building; contactless and higher safe.

AR-401-IO-1709R
AR-401-IO-0016R
AR-403-IO-0404M



逃生指引控制器 Escape Exit Guide Controller



緊急逃生指引燈 Escape Emergency Exit Light

透過Modbus控制器及後台軟體可順序運動開啟最佳逃生路線的指示燈，供人員逃生使用
When any emergency or fire occur, the indicator lights connected to Modbus I/O control panel and software can be turned on in sequence and provide the best escape route for personnel to escape.



智能電梯 Smart Lift Control

可設定使用者在指定的期間內刷有效卡通行一個或多個樓層；管理者也透過軟體釋放電梯按鈕供訪客臨時使用。
The user with an assigned valid card can access specified floors during specified period. The floor button can be temporary released through software for visitor to use.



門位偵測 Door Sensor



緊急求援 Emergency SOS

智慧停車 Smart Parking

AR-716-E16
AR-725-H

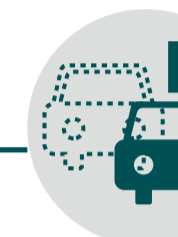


感應車位共享控制器(免接觸) Sharing RFID Parking controller (Touchless)



反脅迫車位 Anti-Duress Parking Space

設置「反脅迫」車位，一旦用戶遭人挾持，把車停入該車位就會自動觸動遠端警報通知警衛求救
Set up specialized "Anti-Duress" parking space; once the user is hijacked and parking the car in this space, the remote alarm will be automatically triggered to notify the guard to help.



車位共享 Sharing Parking Space

透過感應車位共享控制器可設定一張/多張卡共享一個/多個停車位；外接字碼機可提示各種車位使用狀況；滿車/無效卡/違反一進一出管制
Set up RFID card by sharing parking Space controller; One or Multi cards can share one or Multi Parking spaces; Status Display on Display Board and SCADA Software: No vacancy/ invalid card / Anti-pass back error.

AR-725-P
AR-837-W



充電儲值扣款機 Consumption Charging Controller



腳踏車租借站 Public Bicycle Rental Station

透過充電儲值設備給RFID卡片儲值，然後刷卡輸入取車編碼可開啟腳踏車固定機座做使用，使用完畢後刷卡歸還。
RFID cards can be added value through RFID programmer; swipe the card and enter one available bicycle station no. to release the bicycle from the base and swipe card again for returning the bicycle.

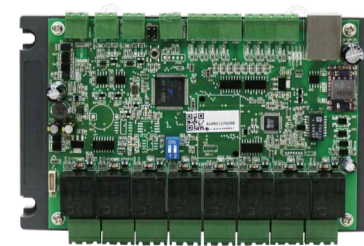


電動汽車充電站 Electric Vehicle Charging Station

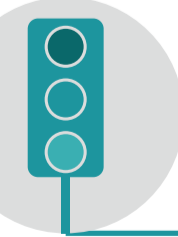
透過充電儲值設備給RFID卡片儲值，然後插入卡片開始充電，取出卡片停止充電；適用於社區/商業大樓/百貨公司的停車場或私人/公共停車場的電動車輛臨時充電。
RFID cards can be added value through RFID programmer and then used for charging Electric Vehicle; Insert card to start charging and take off card to stop charging; it is applied for temporary power charging in parking lots of community center, commercial building, shopping mall and other private or public spaces.

智慧交通 Smart Traffic

AR-401-IO-0808R-U2
節能/車流/人流管制
Power Energy / Vehicle & People Flow Control



交通號誌 Traffic Light



結合後端軟體平台，透過Modbus控制器可運動交通號誌燈自動切換狀態，達到智能交通管控制。
Traffic Light connected to Modbus control panel can be automatically switched to different status through backup software platform to achieve smart traffic control.

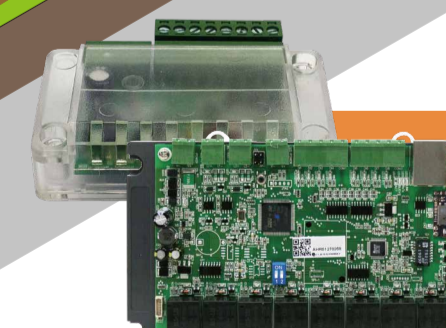
行人安全號誌 Pedestrian Safety Light



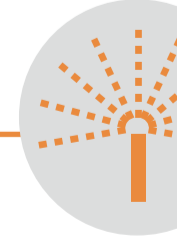
結合後端軟體平台，透過Modbus控制器可運動行人安全號誌燈自動切換狀態，達到行人安全通行之目的。
Pedestrian Safety Light connected to Modbus control panel can be automatically switched different status through backup software platform to achieve smart Pedestrian Safety access.

智慧公園 Smart Park

AR-403-IO-0404M
AR-401-IO-0808R-U2



定時灑水系統 Auto-Scheduled Sprinkle Control



可於遠程軟體平台設定自動灑水排程，透過Modbus通用I/O模組定時自動觸發戶外灑水系統，以達到節省水目的。
The Auto-schedule can be set through Remote software and then the outdoor sprinkler can be automatically triggered through the Modbus universal I/O module, in which can save energy and water.



街燈自動排程控制 Auto-Scheduled Street Light Control

可於遠程軟體平台提前設定自動排程，透過Modbus通用I/O模組定時開啟/關閉街燈，達到節省電目的。
The Auto-schedule can be set through Remote software and then the street light can be automatically turned on or off through the Modbus universal I/O module, in which save energy and power.