

Outdoor Electronic Magnetic Lock 600LBS(Face Mount)

AR-0600M-WPF



Table of Contents

| | |
|--|----|
| 01. Product Information | 01 |
| 02. Wiring Diagram & Installation Manual | 01 |
| 03. Installation Manual | 02 |
| • Dimension and Diagram | 02 |
| • Installation Diagram Template | 03 |
| 04. Installation method for the Armature plate | 04 |
| 05. Lock Body Installation Instructions | 05 |
| 06. Installation with Bracket | 06 |
| 07. Product Content | 06 |

01. Product Information

Product Specification

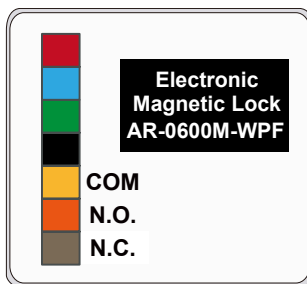
- Power Supply : 12VDC / 24VDC
- Current Draw : 560mA/12VDC : 280mA/24VDC
- Holding Force : 270KG(600LBS)
- Lock Surface Temperature : \leq ambient temperature \pm 20°C
- Operating Temperature : -10°C ~ +55°C
- Lock Body Dimension (mm) : 47(H) x 251(W) x 25(D)
- Armature Plate Dimension (mm) : 40(H) x 185(W) x 15(D)
- Material : Alluminum Alloy 6063-T5

Key Features

- The lock body of the full magnetic lock is meticulously crafted with SUS304 stainless steel and UL94V0 fire-resistant and flame-retardant materials.
- Holding force increased by 10%, 250Kgs \rightarrow 270Kgs

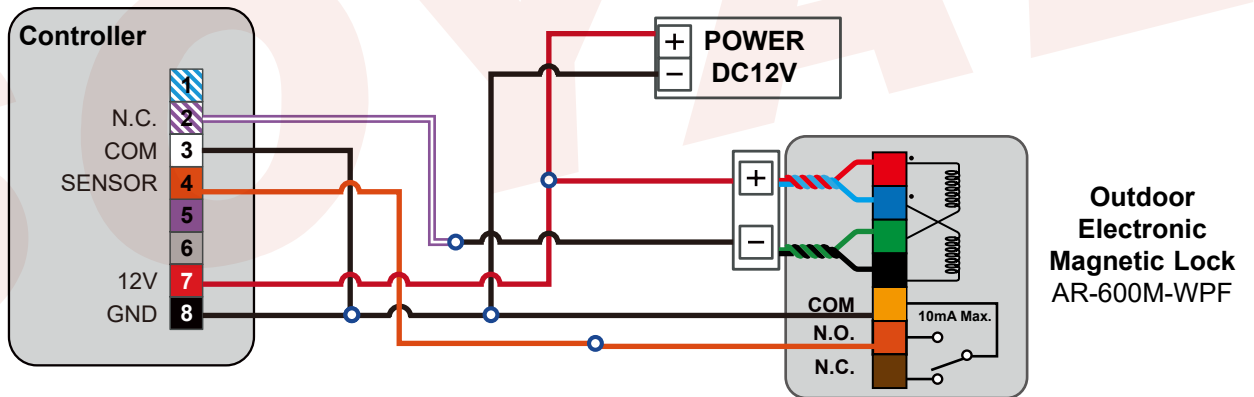
02. Wiring Diagram & Installation Manual

Wiring Table

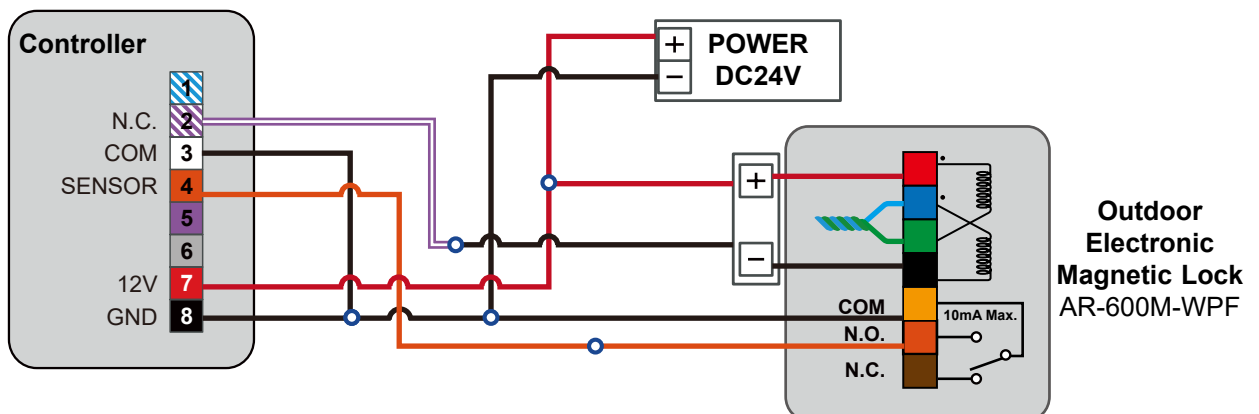


| Wire Application | Color | Description |
|-------------------|--------|--------------------|
| Power 12V/24V | Red | -- |
| | Blue | -- |
| | Green | -- |
| | Black | -- |
| Door Status Relay | Yellow | (COM) DC 24V 1 Amp |
| | Orange | (N.O) DC 24V 1 Amp |
| | Brown | (N.C) DC 24V 1 Amp |

Power 12V Wiring Diagram



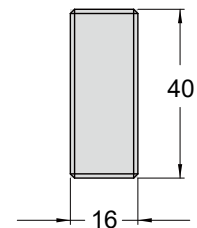
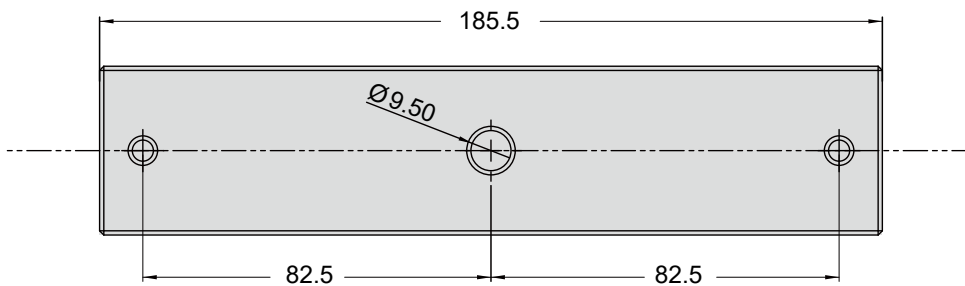
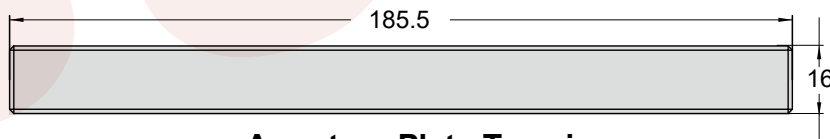
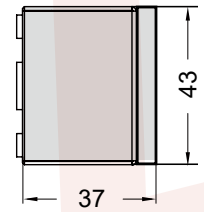
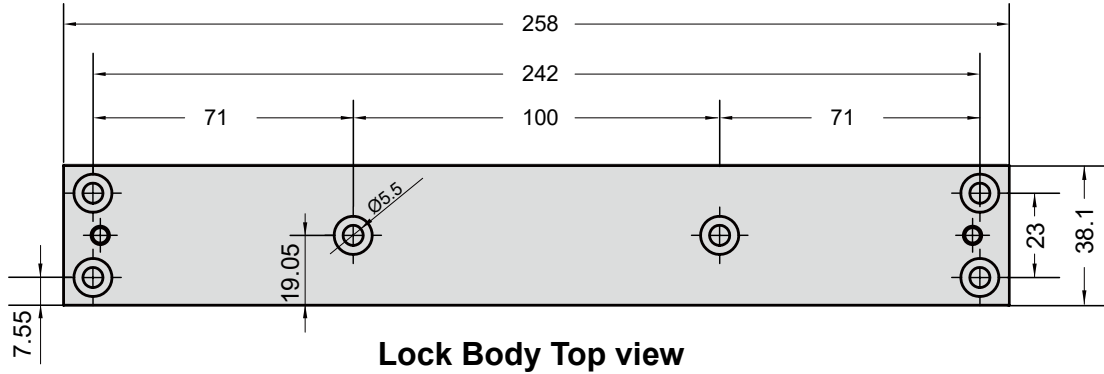
Power 24V Wiring Diagram



03. Installation Manual

Dimension and Diagram

Unit (mm)



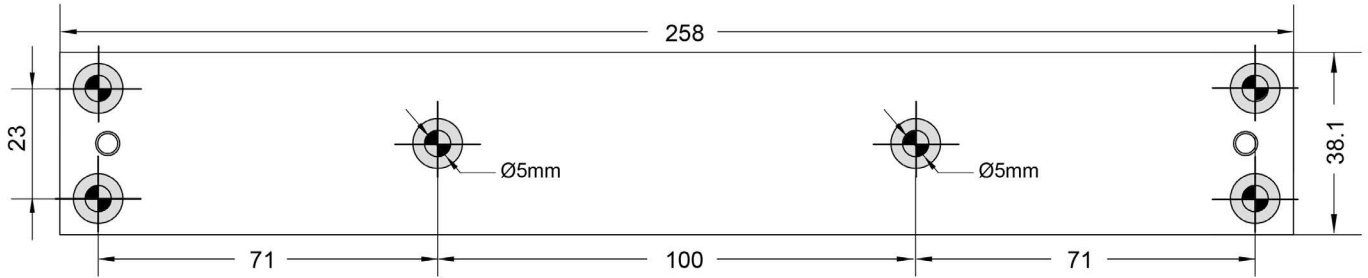
Installation Diagram Template

TEMPLATE AR-0600M-WPF

SOYAL[®]

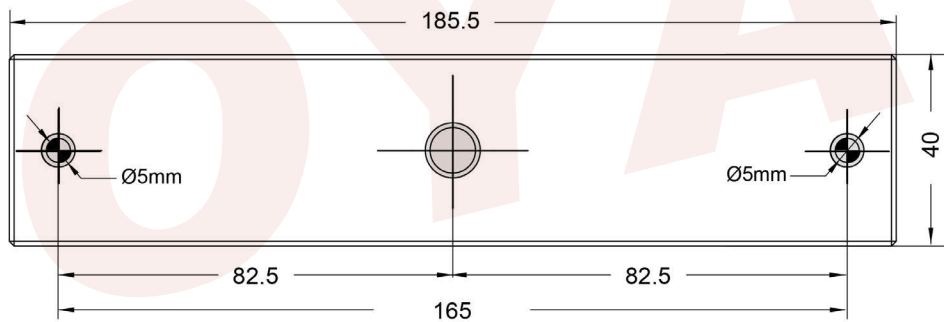
Installation Diagram for Outdoor Electronic Magnetic Lock(Face Mount)

(Unit : mm)



Installation Bracket

For Lock Body



Armature plate

V240110

For Armature Plate

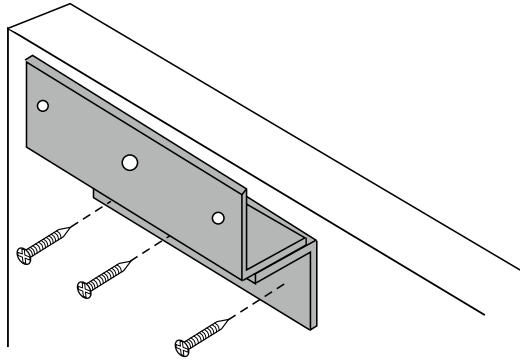
Instructions for use:

Place the hole template on the desired drilling location, and double-check if it is in the correct position before drilling. Then, proceed to make the hole.

04. Installation method for the Armature plate

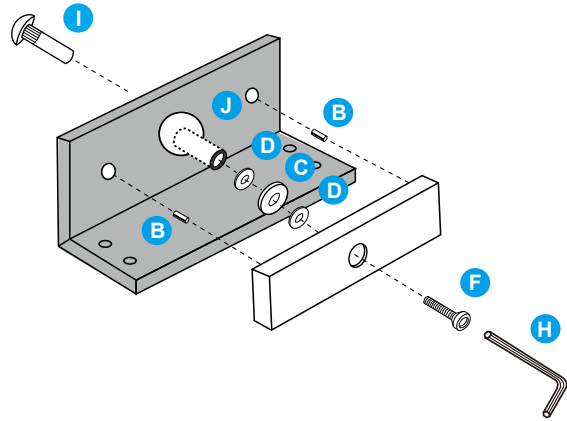
Armature Plate

1 Secure the Z bracket to the door



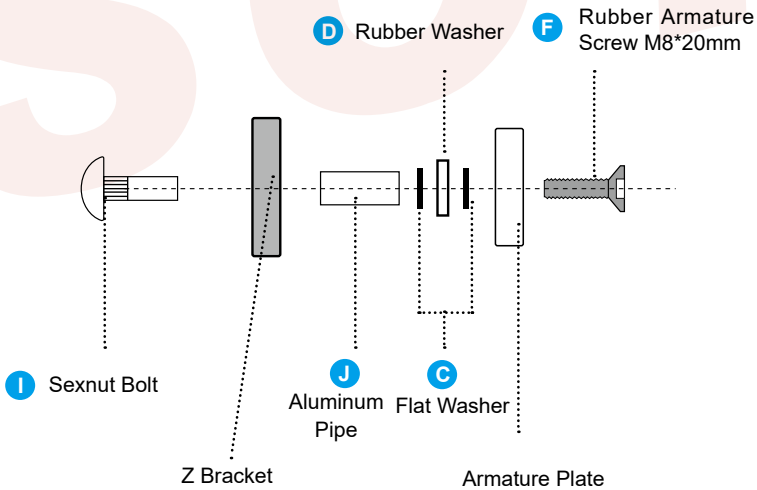
The suction plate needs to be installed on the bracket, so the auxiliary bracket should be installed on the door according to the hole positions.

2 Assemble the suction plate and related components

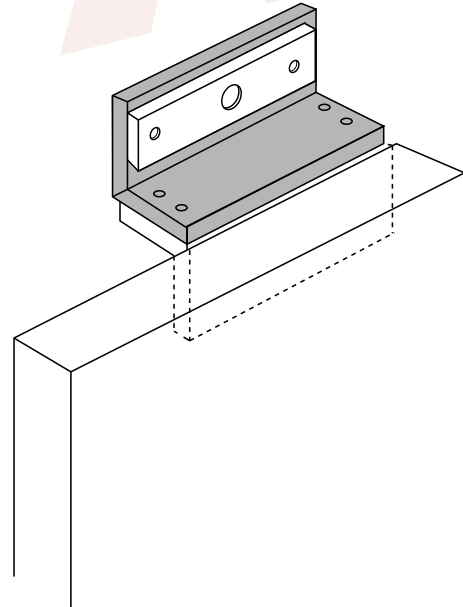


Assemble the mushroom head screw, metal sleeve, spring pin, washer, rubber gasket, and rubber screw according to the diagram.

Armature Installation Side View



4 Finished installation

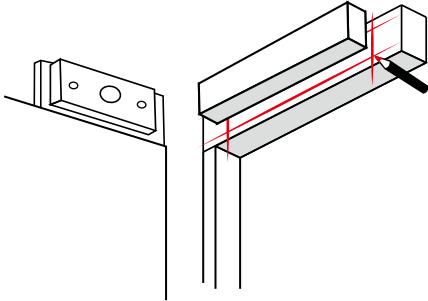


Complete the installation of the suction plate on the Z bracket.

※Remarks: Rubber washer can make small adjustment and movement for the armature plate, but still tightly secured armature plate and lock body.

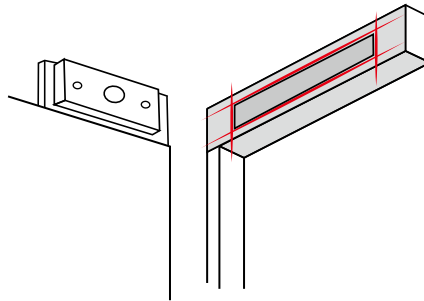
05. Lock Body Installation Instructions

1 Draw positioning line of lock body



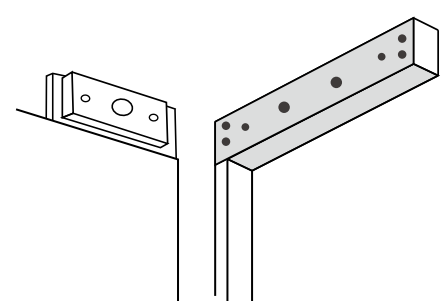
Place the magnetic lock body on the door frame, align the installation position of the lock body, and mark the location with lines for positioning.

2 Mark hole drilling position



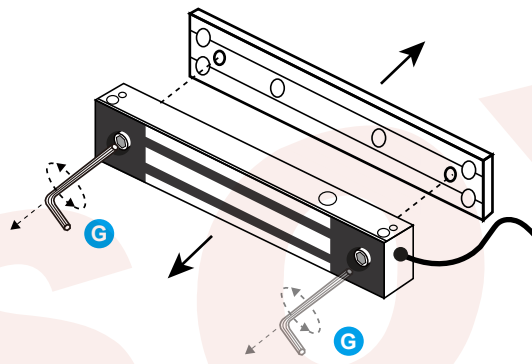
Place the peeled lock body hole template according to the marked lines, and mark the hole positions on the door frame.

3 Hole drilling



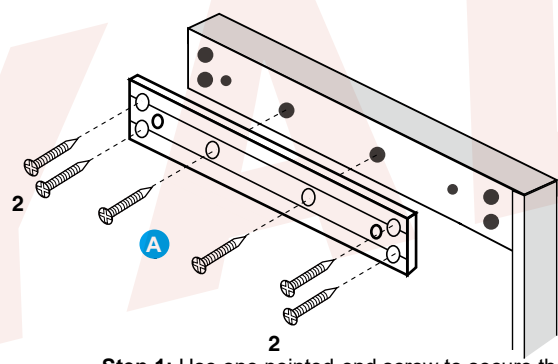
Perform the drilling operation at the marked hole positions.

4 Remove the Mounting Plate from the lock body



Use a hex wrench (M4) to loosen the screws on the lock body, turning them until the lifting strip can be removed.

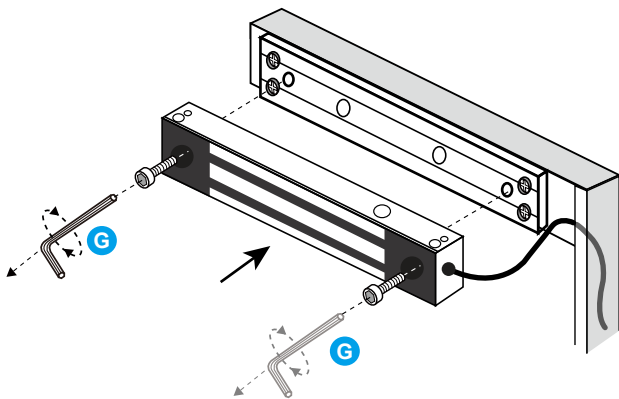
5 Mounting Plate fix to door frame



Step 1: Use one pointed-end screw to secure the middle hole to the door frame, allowing for slight adjustment of the installation position.

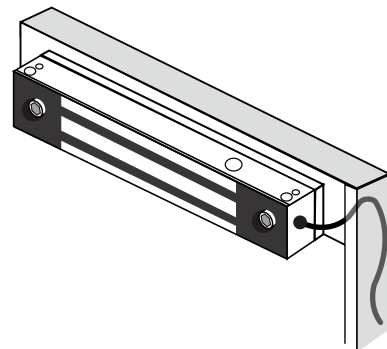
Step 2: After adjusting to the appropriate position, use other pointed-end screws to secure the lifting strip to the door frame.

7 Install lock body on the Mounting Plate



Use a hex wrench (M4) to secure the lock body to the lifting strip.

8 Installation completed

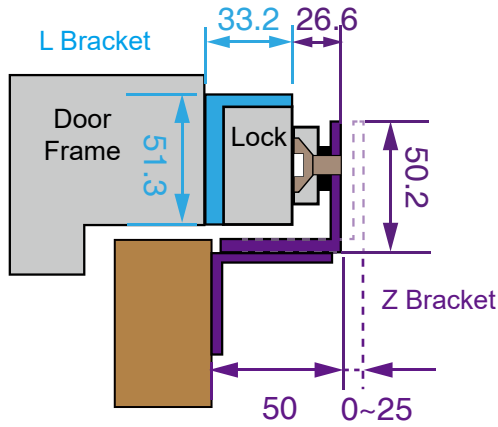


Complete the installation and test the magnetic force.

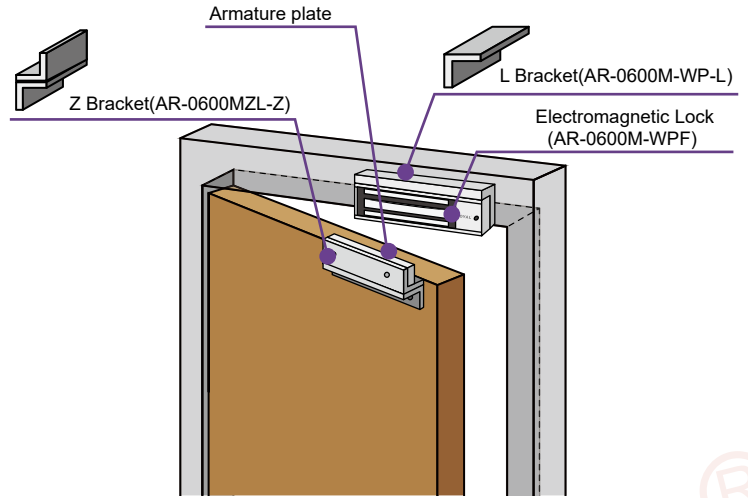
06. Installation with Bracket

Narrow Door Installation (Inswing Door)

Unit : mm

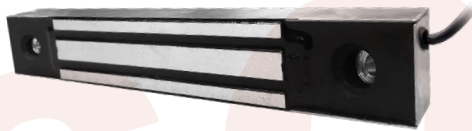


Lock : AR-0600M-WPF / Bracket : AR-0600MZL-WP
(L : ■ / Z: ■)



07. Product Content

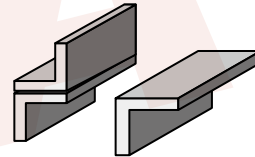
Electromagnetic Lock



AR-0600M-270

Optional Order (Bracket)

① LZ Bracket



AR-0600MZL-WP

Content

① Accessories & Tools

A



X7

Fixing Screw
4mm*25mm

B



X2

Guide Pin

C



X1

Rubber
Washer

D



X2

Flat Washer

E



X2

Secure Nut

F



X1

Rubber Armature
Screw M8*20mm

G



X1

Hexagon Allen
Wrench(M4)

H



X1

Hexagon Allen
Wrench(M5)

I



X1

Sexnut
Bolt

J



X1

Aluminum
Pipe

② Installation Diagram for Magnetic Lock Sticker

