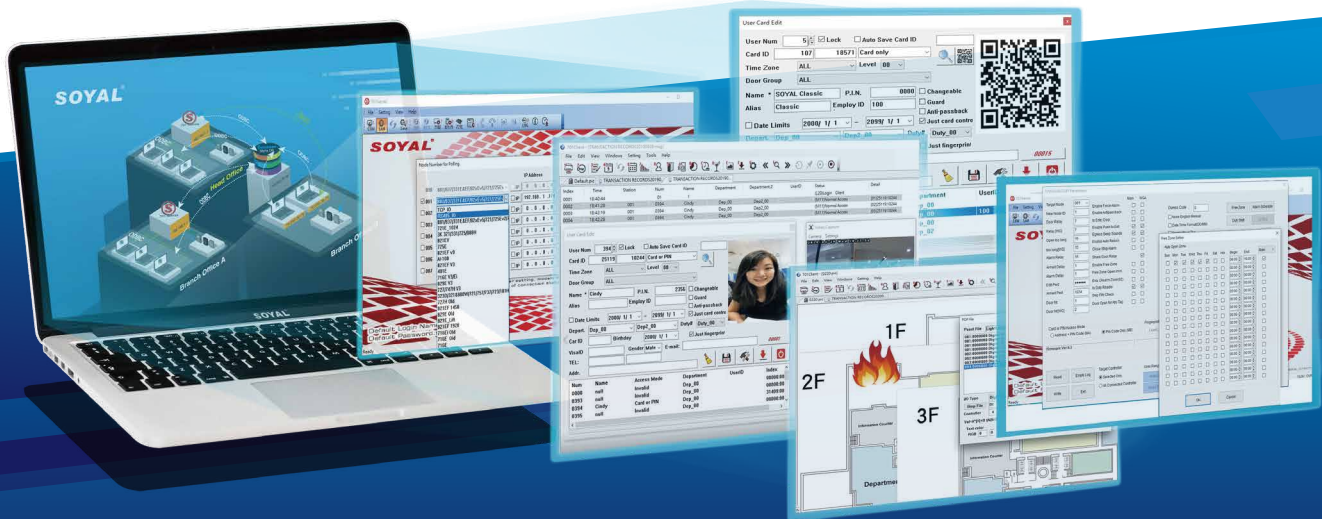


# SOYAL 701 Server SQL

# SOYAL 701 Client SQL

701ServerSQL: Access Control and TCP-Link Server – Real-time Resident Core Software

701ClientSQL: Access Control and Graphic Animation Control Software – Multi-User Workstation User Interface



### File-Based & Data-Based Supported

- SOYAL 701SQL software support both File-Based and Data-Based system enabling customers select the system format per their needs.
- Data-Based system facilitated development of new applications program.



### Strong R&D capability for customized design

- SOYAL R&D engineers are much experienced in offering modification of software, firmware and even hardware, who are dedicated at SOYAL more than two decades and would be lasting continuously.
- Unified hardware with thousands firmware version to fit your various demand, that sometimes would need a customized software as well. SOYAL welcome small software modification.



### Access Control, Time Attendance, Lift Control, Parking Management, Central Monitoring

- Beyond Access Control, Time & Attendance, the event logs can be generated as daily report, multi-days report, monthly report, salary report, time attendance report as well as Elevator Control, Car Park Control, Projects Management and Operators Authority Level Control.



### Complete SCADA Control function

- Pop graphic control assist your co-industry integration in between Access control and Industrial Auto control due to universal I/O modules SOYAL provided.



### Unicode Global Languages Unicode Supported

- SOYAL software support Unicode
- Providing software resources file help you simply translate to any other languages



### Sending message, QR code by email

- Created QR code and attendance message be sent by email automatically.
- Comprehensive application in campus and visitor management system automatically sending email notification to designated recipients like front desk in Hostel and student parents.



### Cross-System Software

- SOYAL tailored software supports all SOYAL Hardware enabling control, setting, monitoring, editing, data retrieve and more.
- One software fits all interface such as TCP/IP, Wifi, PoE, RS485, RS232, TTL, UART, no matter what SOYAL hardware you intend to add in and to scale up your system, no need to change software.



### Capturing real time picture

- Take picture of users in real time
- Allow system crosscheck the registered user picture and real time picture to enhance security authentication.



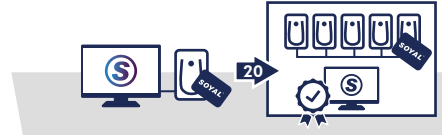
### Effortless learning

- With unceasing innovating and following the original user design interface, logic and framework, users can learn new functions as easy as finger-clicking.
- Remaining same software structure and layout avoiding many studies and making your life easy.



### Open Integration Resources

- The open resources Protocol & SDK provided with high compatibility.
- Wide coverage with JSON, GraphQL and Julia facilitate software developers in various fields to integrate with third-party systems fast and easy.



### The Long-Term Service Software

- SOYAL software is compatible with both legacy device 20 years ago and definitely will be supporting future hardware.
- Sustainable software service is SOYAL's commitment regardless devices installed on site are upgraded and changed.

## Software Functions

### 701Sever SQL

Installation Requirement	PC Minimum Requirements: 32bits CPU, 1.0GHz Speed, 521MB RAM, 5GB HD Converter: Ethernet to RS-485 AR-727CM / USB to RS-485 AR-321CM Operating System: Win7/ Win10/ Win11, Windows Server 2012/ 2016/ 2018/ 2022
Structure	-File Based: personal computer/work station/Server all supported -Data Based: distributed Multiplex Hardware Management Architecture
Controller Capacity	Support connection up to 16 Area, each Area support 254 access controller. Connectivity total up to 4064 doors
Access right	Login password Operators Authority Level Control Automatically record operation log
Multi-Door Controller setting	Anti-passback Auto open time zone Arming mode Active Release all doors Auto Reset Anti-pass Alarm when reader offline Door Number Duress Code Time-Scheduled Output setting for door relay & alarm relay in industry automation door bell for on/off duty Parking Lot space monitoring upload/download fingerprint data Master code to enter programming mode Force Open Alarm output Auto Re-lock (anti-tracking tailgate)
IP-Based controller setting	Force Alarm , Free Zone , read/write fingerprint data lift control
Setting Client computer	Setting Client computer to share the resources of Server computer which connect with controller.
Setting attendance report relevant information	Time attendance base on Work Time "First and Last Records" Or "Duty Function Key", Maximum User On System, Duty Start Time, Update clock, Backup Message File, Execute another program while startup like 701Client

### 701Client SQL

Access right	Login password Operators Authority Level Control Automatically record operation log
User Card Data setting	Guard, Invalid, Valide with access mode: Card only, Card+PIN, PIN only, Finger only, QR Code only, QR Code+PIN, expiration
User Capacity	Optional for supported user capacity total 4 options 5,000/10,000/15,000/20,000 (32,000 / 65,000 required to use third party system)
Door Group	Door group can be adopted to set user access with time zone for each door.
Time Zone	Enable/Disable time zone Limit the access time of entry/exit
Holiday schedule	max. 120 days
Salary Edit	Can set up User Card and Salary at same time efficiency.
Preference setting	View Option of Report/History
QR Code	Generate QR Code and saved to user card data
Sending email	send to assigned e-mail address: generated QR Code, daily log
Monitoring Reader Status	check the current controller status, and perform the actions such as open door directly via PC or arm/disarm the designated controller.
Export/Import	Import/Export User Data, Setting Paramaters and Multiple messages in .txt or .csv
SCADA mapping	Remote control, set up abnormal events indicator, enable arming and alarm output
Generate Report	Daily report , Monthly Report , Time & Attendance Report , Payroll Report , Project Management
More Functions	. Intuitive graphic icon tool bar make the interaction more simple, fluid and efficient. .Attendance Shift .Capturing live picture and more