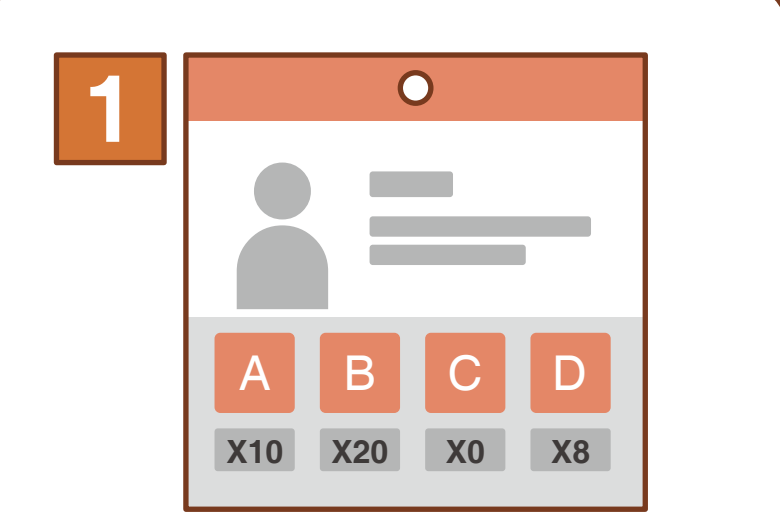
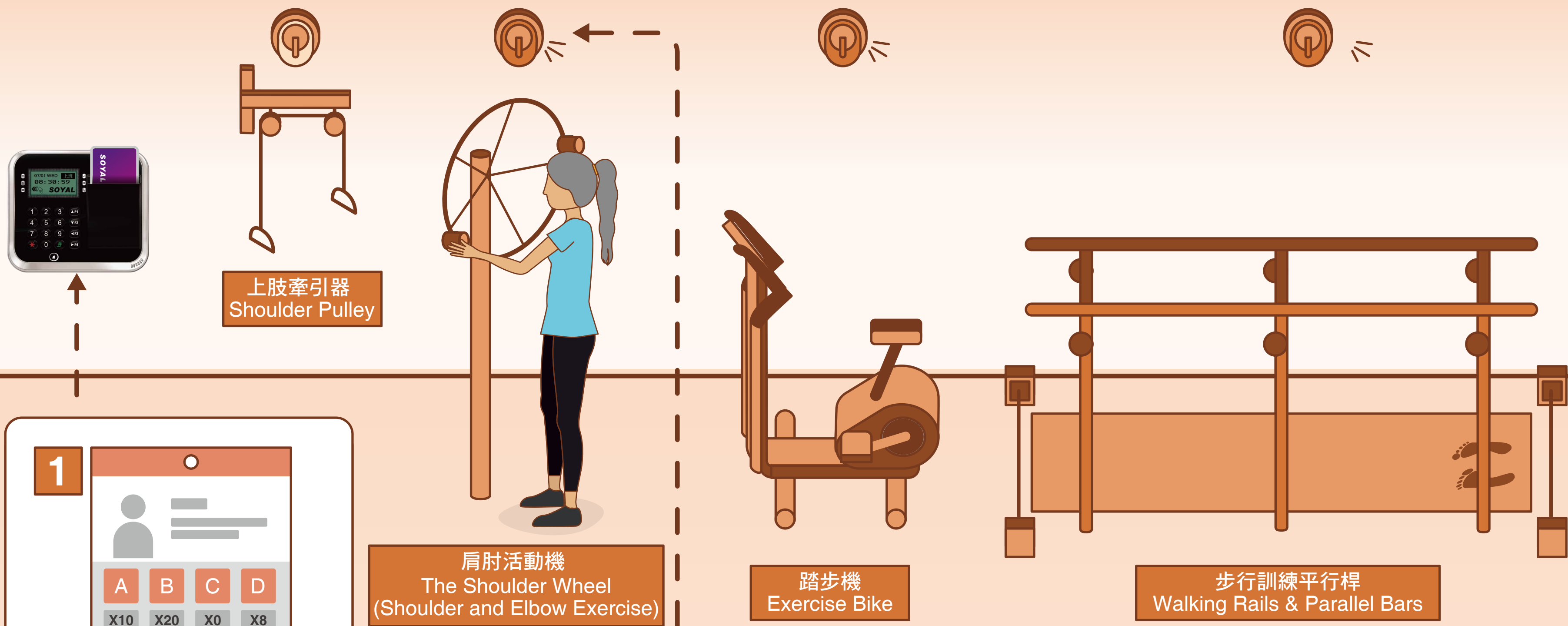


運動關關 LOHAS Sports



1 卡片可設定依個人身體狀況量身訂做專屬的運動復健課程，建立個人健康資料庫，隨時掌握健康情形。Card can be set up according to personal physical health condition and create an exclusive rehabilitation program and record in on a database system, to know well health conditions at any time.

2 RFID控制器讀取卡片後可搭配萬用I/O模組與指示燈，啟用該位居民適合的運動復健設備，每個項目完成前可設定LED閃爍提示，激發相關興趣，順利完成每日訓練計畫，加強復健效果。

RFID controller paired with I/O module series and LED indicator, activate the designated rehabilitation equipment by inserting card to the card holder controller. To make rehabilitation program fun and giving a sense of completing the rehabilitation program, LED can be set before each set is completed as a reminder.

健康促進 Health Facility

- 照護管理電腦化，評估追蹤運動紀錄，調整訓練部位、項目及難易度，減少藥品使用。
Computerized health care management, evaluate and track exercises record, trained body part and assigned machine, adjust difficulty level, and reduce the use of medicine.
- 運動紀錄可累積紅利點數，兌換獎品，增強使用動機；可看到個人進步成績，落實樂活運動。
Exercise record can be accumulated into a bonus point. Redeem for prizes and increase motivation to exercise; be able to see personal achievement and progress, put into action LOHAS movement.
- 提供開放式通訊協議，連結醫院醫療體系，提供完整健康照護與緊急醫療服務。
Provide an open source protocol to integrate with HIS system that helping a complete health care and emergency medical services.

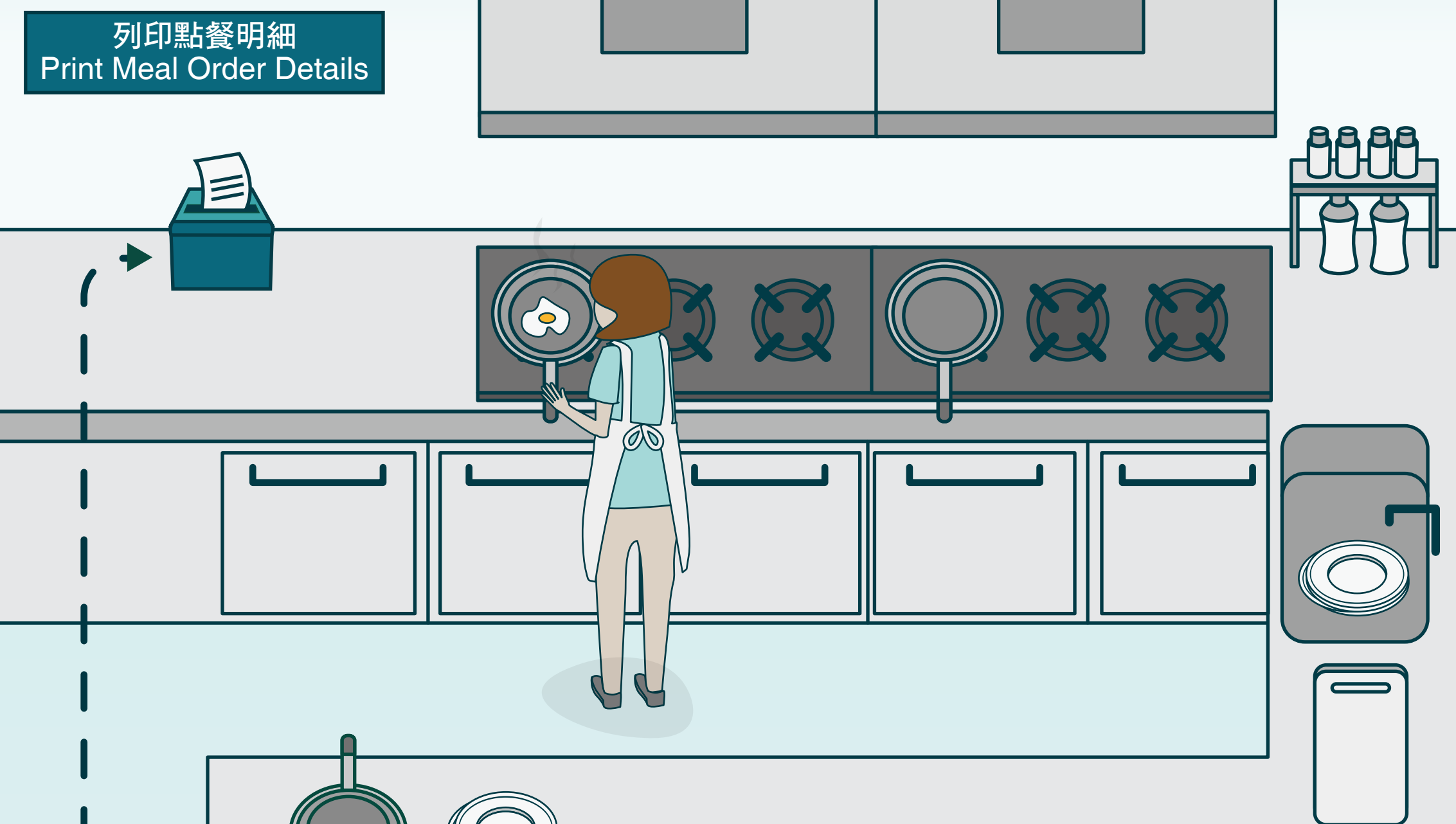
節電器(RF Card) LCD Card Energy Saver AR-837-W

- 完整面板指示 Full Indicator
- UART擴充應用 UART Port
- 彈性延伸功能 Flexible Expandability

萬用 I/O 模組 Universal I/O Module AR-403-IO

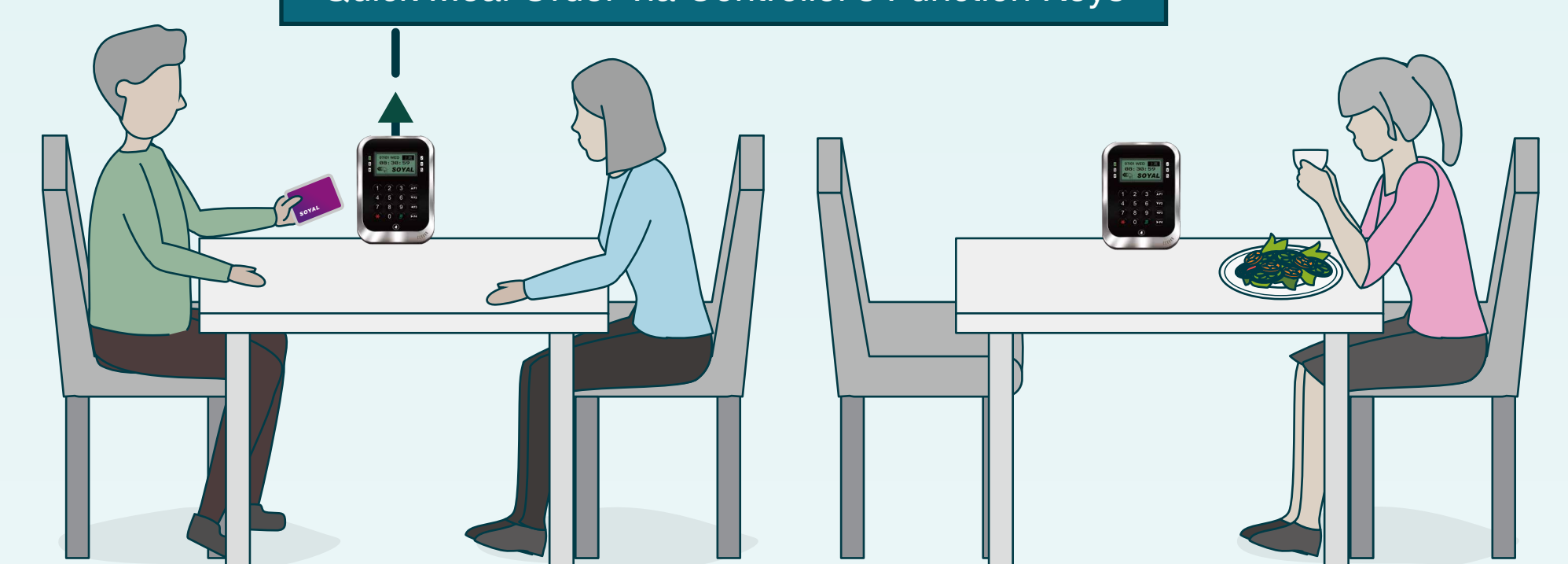
- 體積精巧 Small Size
- 支援多種 Modbus通訊協定 Multi-Modbus Protocol Supported
- 彈性延伸功能 Flexible Expandability

餐廳 Cafeteria



列印點餐明細
Print Meal Order Details

快速鍵輕鬆點餐
Quick Meal Order via Controller's Function Keys



膳食紀錄，結合個人健康資料庫，分析長者用餐情形，作為每月菜單設計參考。若機構採中央廚房配送系統，可提供資料/報表作為費用結算依據。
Planning a monthly meals menu by considering daily diet record, combined with personal health data, and design tasty and age group (senior residents). With cooperation between healthcare center and central kitchen, obtain data/reports for counting meals cost.

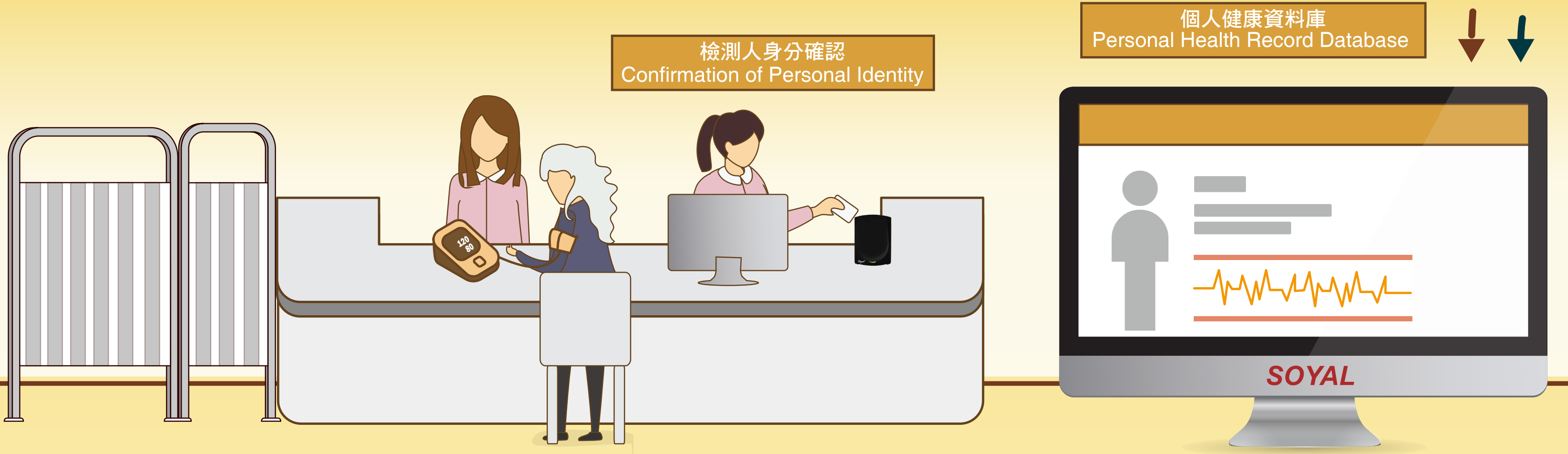
自助點餐 Self-Service Order

- 自主選擇每日膳食，讓長者老有所用，化被動等待為主動選擇，提升個人價值與自我認同。
Senior residents can freely choose their own meals to enhance activeness, decrease meals waiting time and to boost personal value.
- 螢幕型控制器內建4個功能鍵，輕鬆選擇所需餐點；擴充連接印表機，刷卡點餐即自動於廚房列印餐點明細，提升備餐效率，節省人力成本。
LCD controller is built-in 4 function keys to easily select meal. Integrated features with line printer, after swipe resident's card and select meal, meal details will automatically printed in the kitchen. That way meal preparation has become more efficient and save on the labor cost.

感應式圖形顯示多功能控制器
Contactless LCD Multi-function Controller AR-837-E

- 完整面板指示 Full Indicator
- 支援儲值系統&電子設備整合 Cashless Payment & Electronic Equipment Integration
- 內建門鈴按鍵 Door Bell

健康中心 Health Care



檢測人身分確認
Confirmation of Personal Identity

個人健康資料庫
Personal Health Record Database

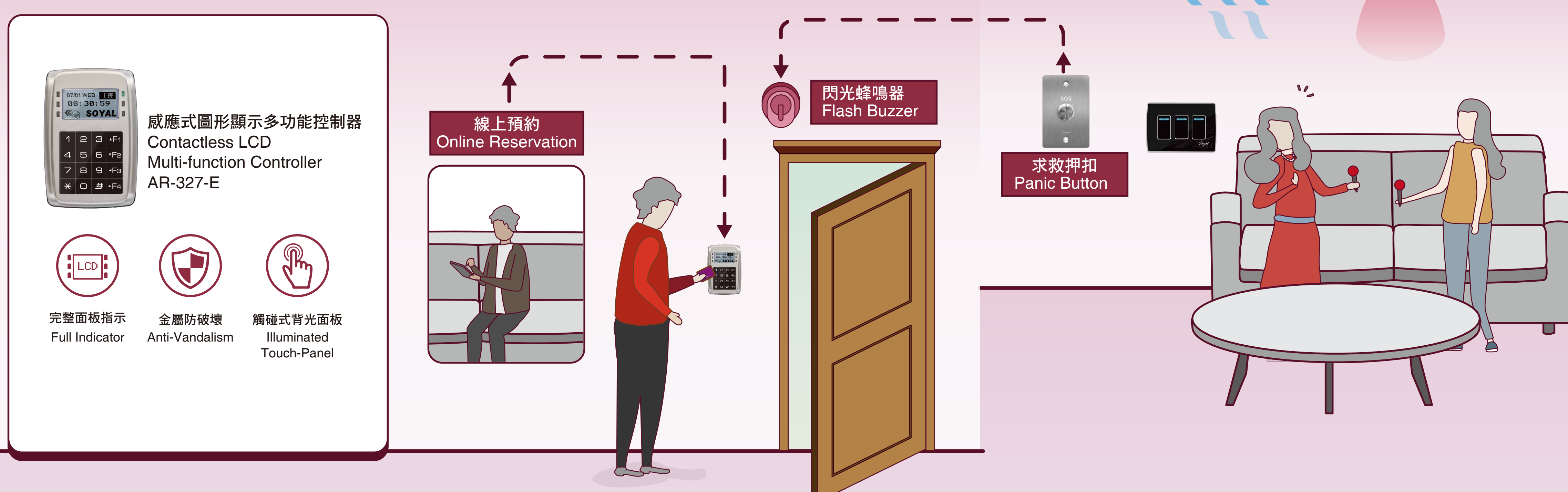
健康照護 Health Care

- 建立個人健康資料庫，並隨時關心生活動態掌握健康情形。
Create a personal health record database, concerning health activities and understanding the health condition
- 確認個人身分，生理監測測量後上傳至平台，避免手抄錯誤，更節省手抄紀錄的時間。
Confirm personal identity, upload physiological condition to the system. Avoid human error and save time when recording data by handwriting.
- 達到自我生理健康監控，維持良好的慢性病管理。
Self-monitoring physiological health and sustaining self-health from chronic disease
- 提供開放式通訊協議，連結醫院醫療體系或社區長期照護服務資源。
Provide an open source communication protocol to link all of the medical system and long-term care data

MIFARE 發卡機
MIFARE Card Programmer AR-725-P

- USB通訊介面 USB Interface
- 支援SOR防拷貝 SOR encryption for anti-cloning
- 彈性延伸功能 Flexible Expandability

休閒娛樂 Leisure and Entertainment



養生休閒 Health & Leisure Area

- 提前預約空間的使用，協助居民組織聯誼性社團定期聚會，如合唱團、卡拉OK歡唱社等，鼓勵參與以形成人際網絡，走出房門與他人互動，豐富生活。
Improve residents social life and enrich their life to interact with each other by organizing annual gathering and hold an event. For example choir, karaoke, and many more. Allow residents to register and make reservation in advance before using a particular venue or attending a gathering.
- 防破壞RFID控制器，提升空間使用安全等級，可編輯通行時段/組別/人員，避免空間重複預約。
With vandal-proof RFID controller, enhance security level on the area. Setting access time, residents name, and group in advance to avoid repeated appointments on the same area.
- 介接萬用I/O模組時，可運動預約空間內的各項控制，如：空調、燈光等，若有緊急狀況，按壓求救押扣，即時觸發蜂鳴器並傳訊到管理中心，保護居民人身安全。
Integrated with I/O module, air conditioner, lighting and electric equipments in room can be remotely control. In case of emergency, push emergency button to trigger alarm and at the same time emergency signal will be sent to the control center